



ZETTTEX

www.zettex.com

PRODUCT RANGE

STICK WITH US FOR A STRONGER WORLD

Different demands across the globe require suppliers and producers that are flexible, deliver excellent quality products, and will assist in all possible ways in different markets.

Zettex is a leading manufacturer of sealants, adhesives and industrial aerosols. With several production facilities in the Netherlands, the UK and Poland and sales offices in Dubai and Turkey, Zettex is serving their main markets: building & construction, roofing, industry and automotive. Its product range contains polymers, silicones, PU sealants and adhesives, PU foams, fire resistant sealants, acrylics, technical aerosols, wood adhesives, contact adhesives, pressurized canisters and a variety of accessories. Zettex currently produces 85% of this range in all thinkable kinds of packages. Private labels are produced as well, starting from flexible quantities.

Zettex' focus is not only on mass production of high end products, we care about our customers. Giving them the support they need in their daily jobs, when it comes to technical assistance, marketing assistance, or research and development of specialized one of a kind solutions for your specific demand, Zettex is a reliable partner which will fit in your supply chain without any problem.

In this product brochure you will find our complete product range, carefully developed and proven over the years. Products with outstanding performances, giving you the opportunity to deliver a perfect result.

To learn more about our products and services, feel free to contact us directly and see what added value we can be for your company.

Team Zettex



Zettex Europe B.V.

Plaza 20, 4782 SK Moerdijk, The Netherlands | T +31 (0)888-93 88 39 | E sales@zettex.com | www.zettex.com

	MS	P. 1/4	MS Polymers
	PU	P. 5/6	PU Sealants & Adhesives
	2C	P. 7/8	2C Products
		P. 9/10	Chemical Anchors
	X	P. 11/14	Contact Adhesives
		P. 15/16	Wood Adhesives
		P. 17/18	Silicones
		P. 19/20	Acrylics
		P. 21/22	Fire Resistant
		P. 23/24	Polyurethane Foams
		P. 25/27	Aerosol Lubrication
		P. 28	Aerosol Automotive
		P. 29/30	Aerosol Conservation
		P. 31/32	Aerosol Cleaning
	MI	P. 33/36	Miscellaneous

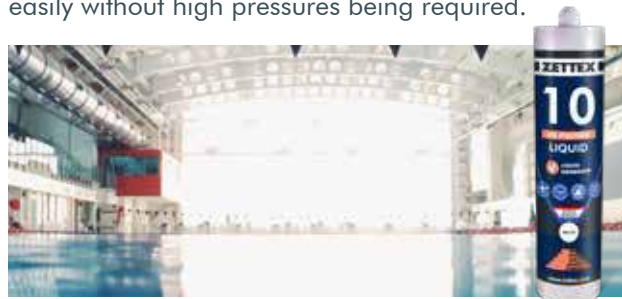




Since 2001 Zettex has produced MS Polymer sealants and adhesives and as one of the first companies doing this, it became our expertise. The sealant and adhesive market of today is caught between conflicting demands. High performance products with great quality are needed, but yet the products must meet strict environmental regulations and must be user friendly. With Zettex MS Polymers you have access to products that don't compromise. MS Polymer are free of solvents, isocyanates and tin compounds, and have better capabilities than traditional sealing and adhesive systems. The following formulations are the most outstanding ones of the more than 60 formulations we developed.

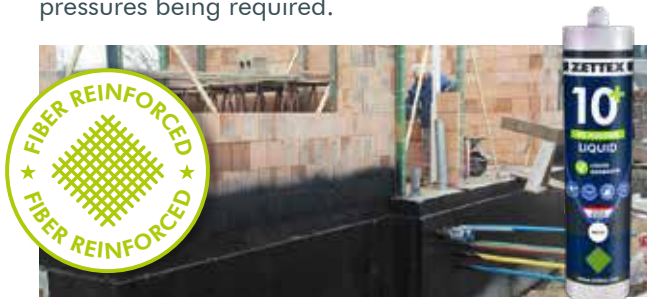
■ Liquid MS Polymer 10

Zettex MS 10 Liquid is a highly fluid sprayable and paintable MS Polymer suitable for use on any surface. Zettex MS 10 Liquid can be used as an adhesive for large surfaces in building construction and industry which will bond to all substrates. Due to its low viscosity, Zettex MS 10 Liquid can be sprayed very easily without high pressures being required.



■ Liquid MS Polymer 10+

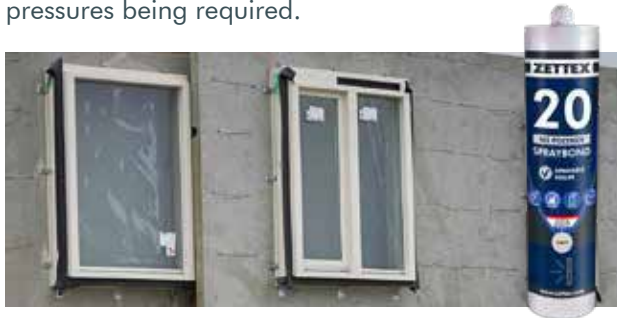
Zettex MS 10 Liquid Plus is a highly fluid MS Polymer suitable for use on any surface. Zettex MS 10 Liquid Plus can be used as an adhesive for large surfaces in building construction and industry which will bond to all substrates. Due to its low viscosity, Zettex MS 10 Liquid Plus can be applied very easily without high pressures being required.



290 ml cartridge - 1 / 2,5 / 5 / 10 kg pail - 200 kg drum

Spraybond MS Polymer 20

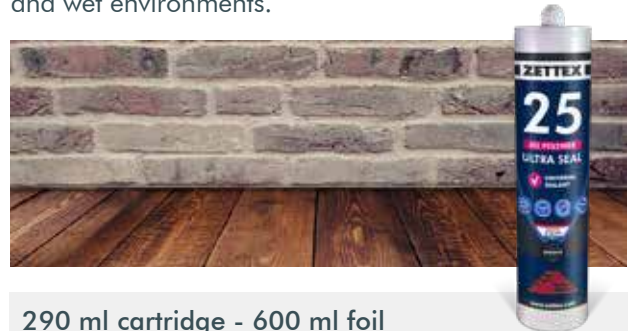
Zettex MS 20 Spraybond is a highly fluid sprayable MS Polymer suitable for use on any surface. Zettex MS 20 Spraybond can be used as an adhesive for large surfaces in construction and industry which will bond to all surfaces. Due to its low viscosity, Zettex MS 20 Spraybond can be sprayed very easily without high pressures being required.



290 ml cartridge - 600 ml foil - 200 kg drum

Ultra Seal MS Polymer 25

Zettex MS 25 Ultraseal is suitable for use on almost every surface. Zettex MS 25 Ultraseal can be used for sealing the most common joints. Zettex MS 25 Ultraseal can be painted with the most common water based paint systems. Drying delay times may occasionally occur. Testing in advance is recommended. Zettex MS 25 Ultraseal is also suitable as a barrier in chemical and wet environments.



290 ml cartridge - 600 ml foil

Construct MS Polymer 30

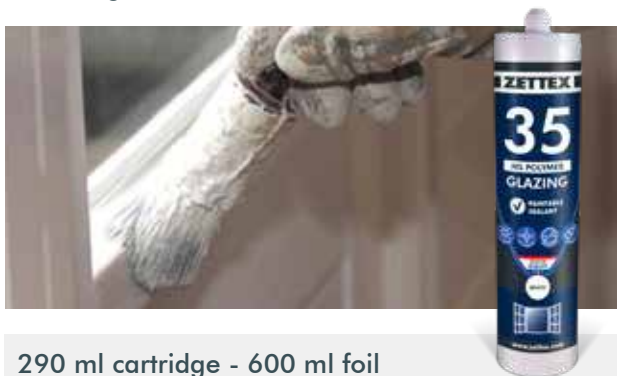
Zettex MS 30 Construct is an all-round adhesive and joint sealant in construction work and for bonding all types of material except PE and PP. Zettex MS 30 Construct has a wide range of applications and is suitable for use on any surface Zettex MS 30 Construct is extremely versatile and is the one stop solution for all your adhesive requirements.

290 ml cartridge - 600 ml foil - 200 kg drum



Glazing MS Polymer 35

Zettex MS 35 Glazing is a high quality, professional, universal and paintable sealant based on MS Polymer. MS 35 Glazing cures under influence of humidity and becomes a durable elastic rubber. Zettex MS 35 Glazing is developed as a universal glazing sealant according to NEN 3576/NPR 3577.



290 ml cartridge - 600 ml foil

Grassbond MS Polymer 40

Zettex MS 40 Grassbond is a durable, one-component artificial grass adhesive, which can be applied on the most common surfaces without using a primer. Zettex MS 40 Grassbond is permanent elastic and free of solvents. Zettex MS 40 Grassbond bonds to all types of artificial grass and can be applied on wet surfaces.



310 ml cartridge - 600 ml foil



■ EPDM Adhesive MS Polymer 50

The Zettex MS 50 EPDM Sealer is a permanent elastic adhesive and sealant for all kinds of EPDM. Zettex MS 50 EPDM Sealer can be applied to American and European EPDM without using a primer. It adheres to wet surfaces as well. MS 50 EPDM Sealer can also be used as a repair sealant.



290 ml cartridge - 600 ml foil



■ Marine Bond MS Polymer 57

Zettex MS 57 Marine Bond is a high quality, one component sealant, based on MS Polymer. Zettex MS 57 Marine Bond adheres to all kinds of wood. In some cases it can be applied without using a primer.



290 ml cartridge - 600 ml foil



■ Superior MS Polymer 60

Zettex MS 60 Polymer is a universal adhesive and construction joint sealant for adhering all kinds of materials except PE and PP. This polymer can be used on any surface, is extremely versatile and is the answer to any requested adhesion. Zettex MS 60 Polymer is completely free of solvents, plasticizers, silicones and isocyanates. Zettex MS 60 Polymer is NSF and Isega certified. Therefore it can be used in the food industry.

290 ml cartridge - 600 ml foil
200 kg drum



■ Panel Bond MS Polymer 65

Zettex MS 65 Panel is, a one component, moisture curing, polymer with an extremely high initial tack. Zettex MS 65 adheres to the most common façade panels without using a primer. Zettex MS 65 Panel can also be applied to cement-bonded panels. Even in humid weather conditions you can use Zettex MS 65 Panel. Consult our application guide before using this product.

290 ml cartridge - 600 ml foil



■ High Tack MS Polymer 70

Zettex MS 70 High Tack is a universal adhesive for adhering all kinds of materials except PE and PP. Zettex MS 70 High Tack has a very high initial tack and can be used on the most common surfaces. Zettex MS 70 High Tack has been specially developed for the adhesion of stone, concrete, mirrors, glass, plaster, PU, PVC, hard synthetics, enamel, ceramics, copper, lead, zinc, tin, aluminum, metals, alloys and stainless steel.

290 ml cartridge - 600 ml foil - 200 kg drum



■ Windshield Adhesive MS Polymer 72

Zettex MS 72 Windshield is a one component car window adhesive for the adhesion of all kinds of windows in car, caravan and bodywork construction. Zettex MS 72 Windshield can be applied without using a primer and has a drive-away time of one hour for airbag fitted vehicles. Zettex MS 72 Windshield is permanently flexible and free of solvents. Zettex MS 72 Windshield is also TUV and NCAP certified.



290 ml cartridge - 400 & 600 ml foil

■ Strongbond MS Polymer 80

Zettex MS 80 Strongbond is an extremely strong adhesive and joint sealant for bonding the most common materials, except PE and PP. Zettex MS 80 Strongbond can be applied to the most common surfaces. Due to its extreme tensile strength Zettex MS 80 Strongbond is suitable for use in the aircraft construction, automotive and off shore.



290 ml cartridge

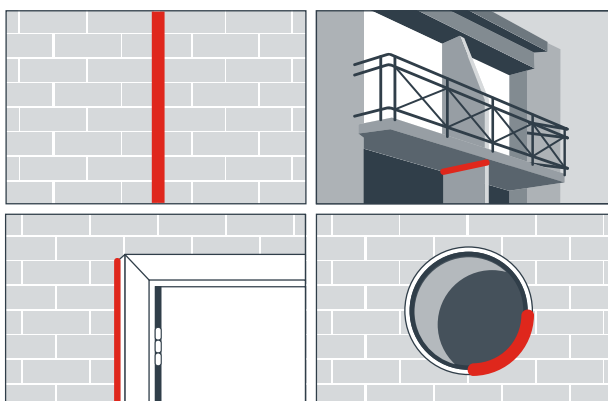


Zettex produces a complete range of premium quality polyurethane sealants and adhesives suitable for several markets. Zettex Polyurethanes have been serving premium roles in both construction and automotive markets for years. With this wide range of polyurethane products, possibilities seem endless. Polyurethane sealants and adhesives offered by Zettex have excellent properties for example in abrasive- and UV-resistance while being an economic solution. Next to the standardized formulations, Zettex produces a variety of specifically designed formulations which will serve your needs. The following products are our best selling Polyurethanes.

All the PU Sealants and Adhesives are available in: 310 ml cartridge - 600 ml foil

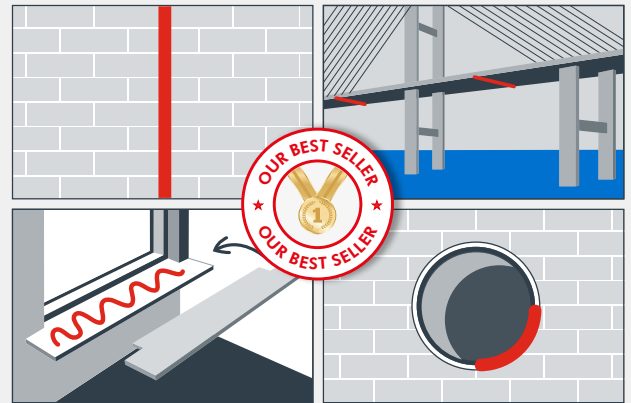
■ PU 20 Construction Sealant

Zettex PU 20 is a permanently elastic, one component construction – and joint sealant based on polyurethane. It is a low modulus sealant with excellent adhesive properties and resistant to aging and weathering. Zettex PU 20 is designed for the sealing of vertical expansion and construction joints.



■ PU 40 Connection Sealant

Zettex PU 40 is a permanently elastic, one component construction and joint sealant based on Polyurethane. For almost all common surfaces in construction and industry. Zettex PU 40 has excellent adhesion properties and is suitable for horizontal dilatation and construction joints.



■ PU 50 Car body sealant and adhesive

Zettex PU 50 is a permanently elastic, one component construction and joint sealant based on polyurethane. Specially designed for car body construction and repair. Fulfills the high quality automotive industry demands. The fully cured product has a high level of shore hardness and a very good resistance against shock absorption.



■ PU 70 Strong windshield adhesive

Zettex PU 70 is a permanently elastic, one component windshield adhesive based on polyurethane. Zettex PU 70 is an extremely powerful adhesive for adhering most of the surfaces used in the Marine, Offshore, Aviation, truck and trailer industry.



■ PU 75 Ultra strong vehicle adhesive

ZETTEx PU 75 is a permanently elastic, one component windshield adhesive based on polyurethane. Zettex PU 75 is suitable for sealing all types of glass windows in the automotive industry. Zettex PU 75 has a drive-away time of 2 hours in combination with 2 airbags. Zettex PU 75 needs to be applied in combination with Zettex Glass Primer. Zettex PU 75 is highly resistant to UV irradiation, weathering and aging.



■ PU 80 Ultra fast adhesive for industrial vehicles

Zettex PU 80 is a one-component, ultra-fast curing, flexible and high performance polyurethane adhesive for the direct glazing of vehicle glass in truck, train and large vehicle production. Zettex PU 80 has a drive – away time of 2 hours in combination with 2 airbags. Zettex PU 80 needs to be applied in combination with Zettex Glass Primer. Zettex PU 80 is highly resistant against UV irradiation, weathering and aging.





2-Component products are developed for special applications which need extreme solutions. With the Zettex 2-Component systems, you do not only notice the benefits offered by 2-Component systems, but also the benefits of the extreme easy to use dosing systems of this Zettex product line. Next to a range of Fast Curing polyurethanes and epoxy adhesives and fillers, Zettex offers many different 2-component products.

■ Epoxy Stick Metal

Zettex Epoxy Stick is a mouldable two component epoxy. This repair tool is mixed (manually) within one minute and provides a long-term repair. Zettex Epoxy Stick can also be applied under water and adheres to surfaces such as fiberglass, metal, wood, concrete and glass. Zettex Epoxy Stick also works very well when it is in contact with saturated salt solutions, leaded petrol, turpentine and propylene glycol.

114 gr stick



■ 2C PU Standard Black

Zettex 2C PU Standard Black is a fast curing 2-component polyurethane adhesive. Cures after a chemical reaction of the two components. Zettex 2C PU Standard Black has an open time of 1.5 minutes and is completely cured in 10 minutes. After curing, the resulting adhesive bond is extremely powerful and resistant to high temperatures, moisture, fuel, many solvents and chemicals. Zettex 2C PU Standard Black has been specially developed for small durable bonding and repair work.

50 ml dual cartridge



■ 2C PU Fast Transparent

Zettex 2C PU Fast Transparent is a fast-curing 2-component permanently transparent polyurethane adhesive. Cures after a chemical reaction of the two components. Zettex 2C PU Fast Transparent has an open time of 1 minute and is completely cured in 10 minutes. After curing, the resulting adhesive bond is extremely powerful and resistant to high temperatures, moisture, fuel, many solvents and chemicals. Zettex 2C PU Fast Transparent has been especially developed for small durable bonding and repair work.

50 ml dual cartridge - 25 ml hand syringe

■ 2C PU Ultra Fast Black

Zettex 2C PU Ultra Fast Black is a fast curing 2 component polyurethane adhesive. Cures after a chemical reaction of the two components. Zettex 2C PU Ultra Fast Black has an open time of 30 seconds and is completely cured in 3 minutes. After curing, the resulting adhesive bond is extremely powerful and resistant to high temperatures, moisture, fuel, many solvents and chemicals. Zettex 2C PU Ultra Fast Black has been especially developed for small durable bonding and repair work.

50 ml dual cartridge - 25 ml hand syringe





CHEMICAL ANCHOR



The Safety of chemical fixation with Zettex Chemical Anchors is based on years of experience in the construction business. Honoured with many available certificates, Zettex Chemical Anchors have been proven in the field. However as a 2-Component curing system, the quality of the fixation is based on the right mixing proportions. Therefore most of the Zettex Chemical Anchors are available in COAX cartridges which can be applied with normal caulking guns to make these amazing products as economical as possible.

Standard Chemical Anchor

Zettex Chemical Anchor is a two-part chemical anchor. It ensures excellent anchoring of threaded ends, bolts, screws and suchlike in hollow and solid surfaces. Examples include brickwork, hollow brickwork, concrete and cellular concrete. Zettex Chemical Anchor is also the perfect solution for the durable anchoring of sun shading, casings and handrails. It is also a good alternative to synthetic repair mortar for concrete, for example.

300 ml cartridge



Pure Epoxy Tropical Chemical Anchor

Chemical Anchor Pure Epoxy Tropical is a high performance two-component 3:1 ratio pure epoxy based anchoring system, which offers extremely high load-bearing capacity in both cracked and uncracked concrete. It has excellent performance at 50°C even at long term, making it the ideal choice for hot climates such as the Middle East, Southeast Asia or India.

300 ml cartridge



Polyester Tropical Chemical Anchor

Zettex Chemical Anchor Polyester Tropical is a universal bonded anchoring system for use in hollow and solid surfaces within dry, wet or flooded conditions. Formulated free of styrene, Zettex Chemical Anchor Polyester Tropical has a very low odor and is ideal for use in confined spaces and indoors. Zettex Chemical Anchor Polyester Tropical is a slow gel and has a fast curing time for high-temperature environments (extended gel time / tropical grade).

300 ml cartridge



Polyester Standard Chemical Anchor

Zettex Chemical Anchor Polyester Standard is a universal bonded anchoring system for use in hollow and solid surfaces within dry, wet or flooded conditions. Formulated free of styrene, Zettex Chemical Anchor Polyester Standard has a very low odor and is ideal for use in confined spaces and indoors.



300 ml cartridge

Pure Epoxy Standard Chemical Anchor

Zettex Chemical Anchor Pure Epoxy Standard is a two-component 1:1 ratio pure epoxy bonded anchoring system for use in cracked and uncracked concrete under normal and seismic conditions (seismic category C1). Developed for most demanding structural applications and rebar connections, Zettex Chemical Anchor Pure Epoxy Standard guarantees a very high load-bearing capacity.



300 ml cartridge



The market of contact adhesives is one of our best skills. We produce and fill many different qualities in different packagings. We can provide you with all different grades to bond the most challenging surfaces in the easiest way. A special attention is required for the canisters. This program is excellent in use and very economical. As explained, we are the experts!

■ Spraybond X10 Standard

Zettex Spraybond X10 Standard is a fast-drying universal spray adhesive for the fast and accurate adhesion of carpeting, foam, cork, insulation materials, rubber, cardboard and the most common wood- and building materials. Zettex Spraybond X10 has a temperature resistance of 55°C maximum.



Aerosol 478 gr - Canister 21,8 kg

■ Spraybond X20 Misty

Zettex Spraybond X20 Misty is an extremely quick-drying universal misting adhesive for the fast and accurate adhesion of rubber, wood, sky, leather, cork and HPL. Zettex Spraybond X20 has a temperature resistance of 110°C maximum.



Aerosol 476 gr - Canister 18,9 kg

■ Spraybond X30 Universal

Zettex Spraybond X30 Universal is a very high quality heat-resistant contact adhesive for the adhesion of the most common building- and industrial materials. Zettex Spraybond X30 Universal is suitable for the adhesion of rubber, cork, linoleum, wood, HPL, Polyether and so on. Zettex Spraybond X30 Universal is having a temperature resistance of 110°C maximum.



Aerosol 478 & 717 gr - Canister 18,9 kg

■ Spraybond X35 EPDM

Zettex Spraybond X35 is a very high quality heat-resistant contact adhesive for the adhesion of various roof materials (EPDM, TPO, Rubber). Zettex Spraybond X35 EPDM can be applied on the most common surfaces like wood, steel, alu backed insulation (fleece backed and unbacked) and bitumen.

Aerosol 500 gr - Canister 18,9 kg



■ Spraybond X45 Premium

Zettex Spraybond X45 Premium is a very high quality heat-resistant carbon/pu based contact adhesive for the adhesion of various roof materials on any surface.



Canister 18,9 kg

■ Spraybond X46 Waterbased

Zettex Spraybond X46 Waterbase is a very fast drying anti-slip adhesive for fixating carpet tiles and the permanent adhesion of PVC. Zettex Spraybond X46 is water resistant and environment friendly.



Canister 12,5 kg

■ Spraybond X47 Cleaner

Zettex Spraybond X47 Cleaner is an Acetone based cleaner designed for the cleaning of hoses and spray guns. It can be used as well for the removal of adhesives on surfaces.

Canister 8,1 kg





■ Spraybond X50 EPS/SPS

Zettex Spraybond X50 is a very high quality contact adhesive without solvents or plasticisers for the adhesion of all types of EPS, XPS and PU.



Aerosol 500 gr - Canister 18 kg

■ Spraybond X80 PU

Zettex Spraybond X80 PU is a single-part; spray applied; moisture curing polyurethane adhesive. Zettex Spraybond X80 PU cures to form a flexible bond. Due to a low foam power Zettex Spraybond X80 PU can be applied smoothly.



Canister 21,9 kg

■ Spraybond X90 Hybrid

Zettex Spraybond X90 is an excellent hybrid polymer based adhesive without isocyanate and plasticisers. Zettex X90 is developed as a one sided spray to bond of all kinds of roofing and flooring materials.

Canister 22 kg



■ Spraybond X100 Foambond

Zettex Spraybond X100 Foambond is a one component polyurethane foam adhesive for bonding EPS, XSP, PIR, PUR, mineral insulation materials, mineral wool, rock wool, cork and other foams. Due to the high initial adhesion, the adhesive can also be used on wall insulation systems.

Aerosol 750 gr - Canister 14 kg



■ Easycontact S10

Zettex Easycontact S10 is a quick-drying universal contact adhesive. Zettex Easycontact S10 is suitable for most materials in construction and industry. Easycontact S10 can be applied with a brush or a roller and is free of DCM.



1 / 2,5 / 5 / 10 / 25 kg tin -
50 / 200 kg drum - 1000 kg IBC

■ Easycontact S20

Zettex Easycontact S20 is an extremely quick-drying universal contact adhesive suitable for most materials in construction and industry. Zettex Easycontact S20 can be applied with a brush or roller and is free of DCM.



1 / 2,5 / 5 / 10 / 25 kg tin -
50 / 200 kg drum - 1000 kg IBC

■ Easycontact S30

Zettex Easycontact S30 will bond a wide variety of surfaces, including wood, metals, rubber, fabric, most plastics, cardboard, polythene and concrete. It is ideal for permanent bonds that require good initial bond strength. It provides good temperature resistance and if protected from contamination has an open time of several hours. When in doubt, test first. Some vinyls contain a large amount of plasticizers, which can migrate and soften the bond of the adhesive.

1 / 2,5 / 5 / 10 / 25 kg tin -
50 / 200 kg drum - 1000 kg IBC





WOOD ADHESIVES



As a special material, wood requires special types of adhesives, wood adhesives have been around for a long time in many different appearances. Zettex supplies many different kind of wood adhesives for most applications. PVAC, Polyurethane and polymer based. With Zettex Wood adhesives connections are joint together in an unbreakable manner. When it comes to structural joints, or fixating carved connections, Zettex provide solutions with excellent properties. Below formulations will cover most applications.

■ Powertack

Zettex Powertack is a fast-curing, water-resistant and odourless assembly adhesive with very high adhesive strength. Due to its unique composition, this adhesive combines all the properties of the already existing wood and construction adhesives in one cartridge!

310 ml cartridge





■ Powertix

Zettex Powertix D4 is a fast-setting transparent polyurethane adhesive with a thixotropic structure. The adhesive cures under influence of moisture from the surface and forms a durable, water-resistant and very strong connection. Zettex Powertix Express has a light filling capacity.



310 ml cartridge



■ Powertix Express

Zettex Powertix Express is a very fast-curing effervescent polyurethane adhesive with a thixotropic structure. The adhesive hardens with moisture from the surface and after curing forms a durable, water-resistant and very strong joint. Zettex Powertix Express has a light filling capacity. Zettex Powertix Express is also solvent-free and once hardened has excellent resistance to high temperatures and aging.



310 ml cartridge



■ D2 Wood Adhesive

Zettex D2 is a universal white wood adhesive for the fast bonding of all kinds of hard and soft woods. Zettex D2 Wood Adhesive is fast drying and environment friendly.



■ D3 Wood Adhesive

Zettex D3 Wood Adhesive is a universal, solvent-free, water-resistant and ready-to-use wood adhesive for interior and exterior applications. Zettex D3 Wood Adhesive is suitable for bonding all hard and soft wood species. Zettex D3 Wood Adhesive is also suitable for bonding HPL panels, unless the other surface is porous in structure.



WATER RESISTANT

250 / 750 ml bottle - 2,5 / 5 / 10 / 25 kg pail - 1100 kg IBC

■ D4 PU Wood Adhesive

Zettex D4 PU Wood Adhesive is a universal, solvent-free, 1-component, water-resistant, wood adhesive for all kinds of exterior applications. Zettex D4 PU Wood Adhesive is quick-drying and has a slightly foaming effect. Zettex D4 PU Wood Adhesive is suitable for constructions / connections, for example: drifts, springs, dovetails, pin and hole connections, assembly mats, façades, doors, ladders and garden furniture.



WATER RESISTANT

250 / 500 gr bottle - 5 / 10 / 25 kg pail



Silicon sealants are the most well know sealants in the market. Due to this, there is in our eyes an overkill in this product range. We want to keep it simple. We have simply the best formulations of all different available grades in the market. Please have a look at this outstanding simple program.

Packing Sealer

Zettex Packing Sealer is a modified moisture-curing acetic acid-based silicone sealant with excellent adhesive properties on a wide variety of materials. Remains flexible and stable at temperatures from -60°C to 330°C. Zettex Packing sealer does not react with petrol or diesel. Zettex Packing sealer has a unique package with a convenient dosing cap.



200 ml pressure pack

Acetoxy Easy Silicon

Zettex Easy Silicon A is a high quality, single component sealant based on acetic acid. Zettex Easy Silicone A is anti-fungal and chlorine resistant.

310 ml cartridge - 600 ml foil



Neutral Easy Silicon

Zettex Easy Silicon N is an Oxym based neutral curing silicon for sealing windows, facades and all type of joints in the building industry. Zettex Easy Silicon N is fast drying and excellent resistant against UV.

310 ml cartridge - 600 ml foil



Sanitary Easy Silicon

Zettex Easy Silicon S is a high quality one component sealant based on al-coxy curing silicones (neutral system). Zettex Easy Silicone is mold- and chlorine resistant. Zettex Easy Silicon is also suitable for use in clean rooms and food industry.

310 ml cart. - 400 & 600 ml foil



HT 300 Easy Silicon

Zettex Easy Silicon HT 300 is an ace-toxy RTV Silicone Sealant which cures with atmospheric humidity to a permanently elastic seal with outstanding resistance to high temperatures, mineral oils, diluted acids, UV and weathering. Resistant for temperatures up to 330°C.

310 ml cartridge



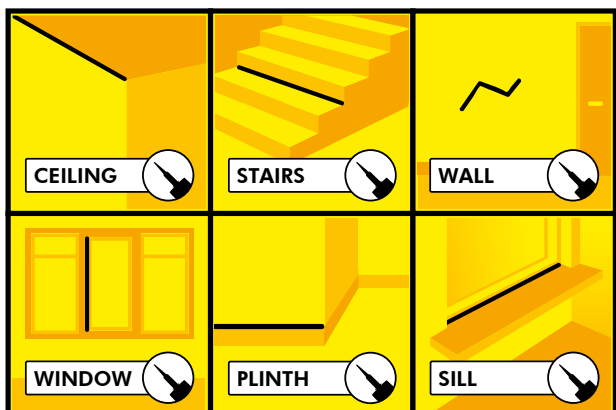


Acrylic sealants are used worldwide in applications where non moving joints must be painted after sealing. Due to the unique water based formulations, Zettex Acrylic sealants are easy to apply, easy to tool and can be painted over without any problem. Specially designed formulations are available to suit different types of applications. Below you can find our most known formulations.

■ Universal Flexcryl

Zettex Flexcryl is a plasto-elastic one-component, water based mastic that cures fast under evaporation of water, used for sealing finishing joints and filling interior cracking. Zettex Flexcryl forms a durable flexible seal and can be painted.

310 ml cartridge - 600 ml foil





■ Exterior Flexcryl

Zettex Flexcryl Exterior a high quality sealer which is paintable with almost all types of paint systems. Zettex Flexcryl Exterior is excellently suitable for outside use and is resistant against moisture and UV.



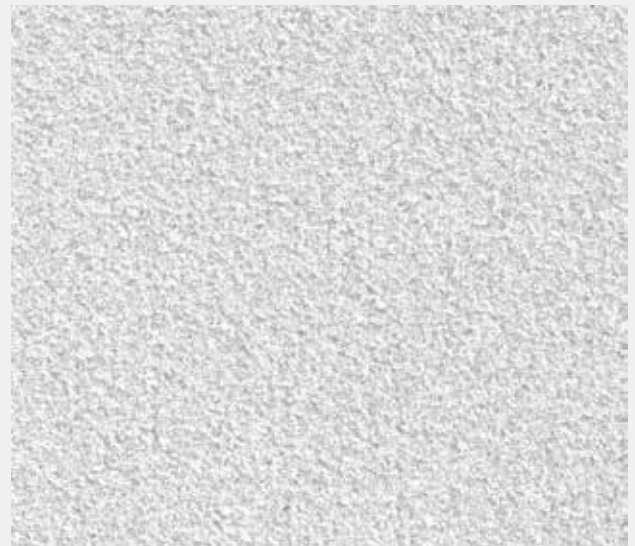
310 ml cartridge - 600 ml foil

■ Structure Flexcryl

Zettex Flexcryl Structure is a plasto-elastic one-component, water based mastic, with an added structure grain, that cures fast under evaporation of water, used for sealing finishing joints and filling interior cracking. Zettex Flexcryl Structure forms a durable flexible seal and can be painted, Zettex Flexcryl Structure gives a structured finish.



310 ml cartridge



■ Non-Crack Flexcryl

Zettex Flexcryl non crack is a plasto-elastic one component, water based mastic that cures fast under evaporation of water, used for sealing finishing joints and filling interior cracking. By using Zettex Flexcryl you prevent the cracking of the paint layers.



310 ml cartridge



FIRE RESISTANT

PEUTZ



Fire resistance is always a high priority when it comes to constructing new buildings. Zettex Europe B.V. offers a wide range of passive fire protection, consisting from a wide range of Foam and mastic, sealants and adhesives that are produced to withstand the highest possible testing criteria, and 4 hours of fire resistance can easily be achieved with our products. Zettex Fire Resistant products are specially designed to cope with extreme heat, flames and smoke, giving you the essential time you need to evacuate your building safely.

Fire Foam

Zettex Fire Foam is a fire-resistant assembly and insulation foam with a fire resistance of 4 hours. Zettex Fire foam can be used for a wide range of construction applications: assembly, sealing, filling and insulation. The product complies with the standards of EI 240 in accordance with EN 13501-2: 2008 and B1 in accordance with DIN 4102-1. The foam has excellent sealing properties against smoke and gas.

750 ml aerosol





FR100

Zettex FR100 is a flexible, single component, fire-resistant acrylic sealant. The Zettex FR100 is fire resistant for up to 4 hours. Zettex FR100 is recommended for all types of dry surfaces and seals with a maximum expansion of 12.5%. The Zettex FR100 can only be used indoors and can be painted.



310 ml cartridge



FR200

Zettex FR200 is a one component, neutral fire resistant silicone sealant. Zettex FR200 has a high flexibility and can be applied to any surface. Zettex FR200 is not paintable. Zettex FR200 has a fire resistance of up to 4 hours.



310 ml cartridge - 600 ml foil

FR300

Zettex FR300 is a high-quality and durable one-component fire-resistant adhesive based on MS Polymer, suitable for fire-resistant bonding of all kinds of surfaces in construction and industry. Zettex FR300 is also chemically resistant and permanently flexible. Zettex FR300 has a fire resistance of up to 4 hours. Zettex FR300 is paintable with most common paint systems. Testing is recommended.



310 ml cartridge - 600 ml foil





POLYURETHANE FOAMS



Today's Construction business requires smarter solutions when it comes to insulation, due to stricter regulations. Therefore working without polyurethane foams is unthinkable. Zettex produces polyurethane solutions that help your buildings become more and more energy efficient. Replacing mechanical fixture without losing strength, Zettex Polyurethane foam adhesives are especially designed to meet your requirements. When it comes to adhering or filling, there is a product which will fulfill your needs. The following products are only a few of our most produced formulations.

■ PU Fix

Zettex PU Fix is a Stone Adhesive with extremely fast adhesion and can be used for bonding all types of stone, ceramics and granite. Zettex PU Fix can be used both indoors and outdoors. Zettex PU Fix dries very quickly and has an extremely high tensile strength.



■ Stonefix

Zettex Stonefix is a one component PU adhesive for bonding blocks and stones. Zettex Stonefix is very economical in use. Using the Zettex Foamgun is necessary for the application. Zettex Stonefix creates a strong bond within 30 minutes and is certified according to the most strict building standards.



750 ml gungrade aerosol - 500 ml strawgrade aerosol



■ Winterfoam

Zettex Winterfoam is a durable and fast curing one-component insulation and assembly foam developed for sealing and filling joints, seams and connections of building elements. Zettex Winterfoam has been specially developed for use in freezing temperatures with a maximum of -30. The foam cures under influence of moisture. Zettex Winterfoam has excellent adhesion to most building materials such as stone, concrete, metal and various plastics (styropor, PU rigid foam, polyester, rigid PVC).



750 ml gungrade aerosol

■ Foam Cleaner

Zettex Foam Cleaner is a powerful cleaner to remove uncured PU residu.



500 ml aerosol

■ Elastic Foam B2

Zettex Elastic Foam B2 is a permanently elastic foam that has been specially developed to absorb movements of surfaces and joints. As a result, the excellent sound and heat-insulating properties between components, such as the joints of window frames, are retained for a long time. Thanks to the unique formulation, the product can be used at temperatures down to -10 ° C. The development and production of this product meet the strict requirements of the ISO 9001 / EN 29001 quality standards.



750 ml gungrade aerosol

■ Gunfoam NBS

Zettex Gunfoam NBS is a durable and fast-curing one-component insulation and mounting foam. Developed for sealing and filling joints and joints of building elements. The foam cures under the influence of moisture. Zettex Gunfoam NBS has an excellent adhesion to most building materials such as stone, concrete, metal and various plastics (styrene, PU rigid foam, polyester, rigid PVC).

750 ml gungrade aerosol

■ PU Foam HH

Zettex PU Foam HH is a durable and fast-curing one-component insulation and mounting foam developed for sealing and filling joints and connections of building elements. The foam cures under the influence of moisture. Zettex PU Foam HH has excellent adhesion to most building materials such as stone, concrete, metal and various plastics (styrene, PU rigid foam, polyester, rigid PVC).

750 ml strawgrade aerosol





AEROSOL LUBRICATION



Ever since the company exists, Zettex has been producing and selling aerosol filled products. Therefore our Aerosol range is very wide, and only contains high end quality products. The range of different aerosols is divided in different groups. We have aerosols for Cleaning, Conservation, Lubrication and Automotive purposes. With the outstanding quality, and the attractive design, Zettex Aerosols are a fantastic addition to your shop. Our fastmovers are listed below.

■ MP 800

Zettex Multi Paste 800 is a ceramic paste designed to protect all types of metals. Zettex Multi Paste gives a very strong bond and provides durable protection against salt, acid and water. Zettex Multi Paste can resist very high temperatures (1200°C) and is chemical resistant. Zettex Multi Paste 800 is the alternative to user-unfriendly and environmentally harmful copper grease.



500 gr aerosol - 250 gr pail - 500 gr pail - 200 ml pressure pack



■ Chaingel

Zettex Chaingel is a high quality universal lubricant and chain spray. Chaingel is resin and acid free, skin friendly, corrosion resistant and waterproof. It creates an active, permanent and flexible lubricant film. Penetrates very easy between moving parts and cures after a few seconds into a perfect lubrication.



500 gr aerosol

■ Multi Spray

Zettex Multispray is a high quality, industrial, penetrative lubricant with a wide range of applications. Zettex Multi-Spray is also an excellent solution to dirt and grease. The product will displace moisture and is often used for the protection of corrosion sensitive material.



500 gr aerosol

■ Superlube Hexaflon

Zettex Superlube Hexaflon is developed to create a dry film, low friction surface, effective over a wide temperature range. The Superlube is resistant against temperatures between -40 °C and 220 °C. Due to dry properties, Zettex Superlube Hexaflon does not attract dirt.



500 gr aerosol

■ Mos 2 Oil

Zettex Mos 2 Oil is an electrically conductive effective rust dissolver with an immediate lubricative effect. Prevents seizure of bolts, nuts and screws. Reduces friction and wear. Prevents damage to thread. Extremely water repellent and high water displacement. Prevents corrosion and protects metal. Reduces and prevents creek and squeak noises. Good creeping properties. Free from silicones and acids. No gumming.



500 gr aerosol

■ Tapping Gel

Zettex Tapping Gel is a high-quality drilling and cutting oil with strong sticking properties an excellent cooling capacity. Zettex Tapping gel keeps drilling and cutting tools in optimum condition. It has a long lasting life for optimal lubrication and cooling of parts.



500 gr aerosol - 5 ltr can



AEROSOL LUBRICATION

■ Silgliss Lubricant

Zettex Silgliss is a universal, silicone-free reasonably high temperature resistant lubricant that is used to improve gliding properties, e.g. in the woodworking industry.



500 gr aerosol - 5 ltr can

■ Silicone Spray

Zettex Silicone Spray is a high quality silicon spray with 70 % of silicons. Zettex Silicone Spray can be used on all kind of surfaces and gives a durable protection.



500 gr aerosol - tin 5 L - drum 50 L

■ Multi Oil

Zettex Multi Oil is a high-quality universal lubricant with a 7-stage action. Zettex Multi Oil is moisture repellent and dissolves rust and dirt.



500 gr aerosol - 5 ltr can



■ PTFE Oil

Zettex PTFE Oil is a very high quality, universal PTFE-based lubricant that can be used in the most extreme conditions. Zettex PTFE Oil ensures perfect adhesion on almost any surface.



500 gr aerosol - 10 ltr can

■ PTFE Grease

PTFE Grease is a high quality sprayable grease which contains PTFE. Zettex PTFE Grease can be used on all type of surfaces and is silicon free. Designed particularly for applications requiring extreme water resistancy.



500 gr aerosol - 400 ml cartridge



■ Balsam

Zettex Balsam is a transparent spray to protect rubbers, PVC, leather and all types of plastics against aging. Zettex Balsam contains silicon and PTFE additives.



500 gr aerosol



■ Cockpit Spray

Zettex Antistatic Cockpit Spray is a silicone-free cockpit spray that is suitable for all types of dashboards and leather surfaces.



500 gr aerosol, tin 5 L, tin 25 L





AEROSOL CONSERVATION



■ Zinc Spray High Zinc Content / Aluminium / Galvaniser

Zettex Zinc Spray is a fast-drying, paintable coating with a very high zinc content. Resistant against chemical and mechanical wear. Produces a strong bond with long-lasting protection.

500 gr aerosol



■ Welding Spray

Zettex Welding Spray is an environmental and health friendly spray without silicons. Can be sprayed in all directions and is non-flammable.



500 gr aerosol





■ High Wax Polish

Zettex High Wax Polish is a premium wax polish based on a blend of naturally occurring waxes. Contains both Carnuba and Bees Waxes for optimum durability and shine.



500 gr aerosol



■ Leak Detector

Zettex Leak Detector is a non-flammable water based foam for the visible detection of gas leaks of sealed installations.



500 gr aerosol



■ Protect Wax

Zettex Protect Wax is a universal, fast-drying protective wax for the long-term protection of untreated metals against rust and corrosion.

500 gr aerosol - Tin 5 L - Drum 50 L



■ Matt Black

Zettex Matt Black Aerosol is a high quality acrylic resin paint with corrosion resistant properties. Gives fast, optimal coverage of the parts to be treated, even on chrome and other types of paint. Keeps its color and covers in one layer.



500 gr aerosol



■ Silver Spray

Zettex silver spray is a fast-drying, paintable coating with a very high zinc content. Resistant against chemical and mechanical wear. Produces a strong bond with long-lasting protection.



500 gr aerosol



■ Underbody Coating

Zettex Underbody Coating spray is a black, bitumen-rich, water-resistant, anti-corrosion coating for surfaces on the bottom of cars. Protects against physical damage, rubble and repels moisture. Zettex Underbody Coating can be painted over with most painting systems.



500 gr aerosol





AEROSOL CLEANING



■ Profi Cleaner

Zettex Profi Cleaner is a medicinal alcohol based degreaser with extremely fast evaporation properties. Zettex Profi Cleaner is a very effective dirt and grease solvent and can be used to remove all types of glues and sealants. Does not leave a residue and is not harmful to the surface.



500 gr aerosol - 5 ltr tin - 25 ltr tin - 50 ltr drum - 200 ltr drum - 1000 ltr IBC

■ Mounting Cleaner

Zettex Mounting Cleaner is a powerful and fast steam cleaner for cleaning all types of surfaces. Zettex Mounting Cleaner removes all kinds of grease, adhesive residue, paint residue, ink residue, paint, varnish and coatings quickly and effectively.



500 gr aerosol - 5 ltr tin - 25 ltr tin -
50 ltr drum - 200 ltr drum - 1000 ltr IBC



■ Airjet Economy

Zettex Airjet is a dry aerosol spray designed to physically remove superficial dirt, grime and other loosely adhering contaminants where "wet", or other normal chemical products are not permissible.



500 gr aerosol



■ Mega Clean

Zettex Megaclean is a rapid-evaporating degreaser for all types of surfaces such as brake rotors, brake callipers, cylinders, engine parts, etc.



500 gr aerosol

■ Tar Remover

Zettex Tar Remover is a special cleaner for removing tar, bitumen, grease, oil and asphalt splashes from different surfaces



500 gr aerosol

■ Security Cleaner NSF

Zettex Security Cleaner is an adhesive cleaner which does not leave any track or residue behind. Zettex Security Cleaner can be used safely on the most common surfaces. Besides, Zettex Security Cleaner is a versatile cleaner and degreaser. It can be used on the most plastics; painted- and lacquered surfaces; vinyl and glass.



500 gr aerosol - Tin 1 & 5 & 25 L

■ Graffiti Remover

Zettex Graffiti Remover removes graffiti thoroughly from most surfaces without damaging them. Besides that, the composition of Zettex Graffiti Remover is extremely effective, without the use of methylene chloride.



500 gr aerosol

■ Stainless Steel Spray

Zettex Stainless Steel Spray is a transparent, dry and waxy protective layer for metal/plastics and painted surfaces. Zettex Stainless Steel Spray very quickly and easily removes all contamination from all types of metals and plastics. Zettex Stainless Steel Spray has a high protective effect and is windproof and waterproof.



500 gr aerosol

■ Multi Foam NSF

Zettex Multifoam is a universal foam cleaner that can be used for all types of surfaces, such as mirrors, glass, plastic, display screens, ceramics, HPL, fabric, leather, etc. Zettex Multifoam penetrates the surface for a deep cleaning.



500 gr aerosol

■ Threadlock Medium

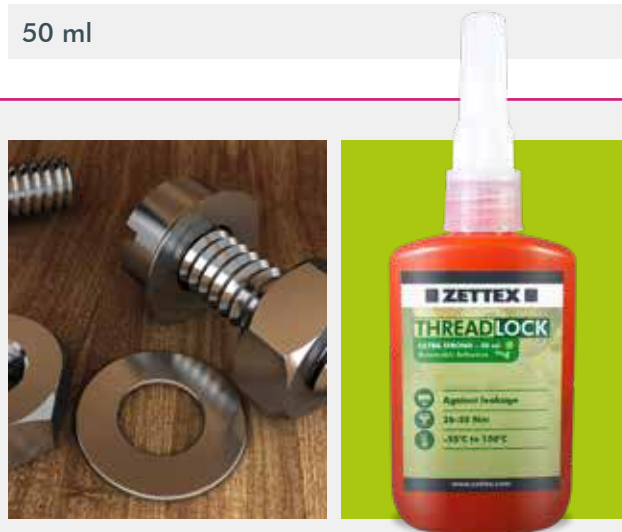
Zettex Threadlock Medium is an anaerobic formulation designed to be used on parts in an "as received" condition, such as those with protective films (oils) etc.

■ Threadlock Strong

Zettex Threadlock Strong is a permanent red coloured general purpose adhesive for permanent threaded assemblies. It locks studs up to 40mm, sealing against leakage and corrosion. It is chemical resistant, resisting fuels, lubricants and most industrial liquids and gasses.



50 ml



■ Threadlock Ultra Strong

Zettex Threadlock Ultra Strong is a permanent Green coloured general purpose adhesive for permanent threaded assemblies. Zettex Threadlock Ultra Strong locks studs up to 26mm. Sealing against leakage and corrosion. It is chemical resistant, resisting fuels, lubricants and most industrial liquids and gasses.

50 ml

■ Cleaning Wipes

Zettex Cleaning Wipes are handy cleansing tissues for the quick and simple removal of oil, adhesives, paint and grease residues. Zettex Cleaning Wipes are highly suitable for cleaning all kinds of surfaces. Zettex Cleaning Wipes can also be used for cleaning hands.

■ Cleaning Wipes Plus

Zettex Cleaning Wipes are handy, fibre-reinforced cleaning tissues for the quick and simple removal of oil, adhesives, paint and grease residues. Zettex Cleaning Wipes are highly suitable for cleaning all kinds of surfaces. The scrub layer ensures that residues can be removed even more thoroughly and quickly. Zettex Cleaning Wipes Plus can also be used for cleaning hands.



80 pcs



■ Superglue

Zettex Superglue is an ultra-fast hardening super glue based on Ethyl Cyanoacrylate. Zettex Superglue is suitable for the fast glueing of different materials.

20 & 50 gr bottle

■ Superglue Activator

Zettex Superglue Activator is a low viscosity, solvent based cyanoacrylate adhesive activator which contains active components dissolved in a hydrocarbon solvent.

200 ml aerosol



■ Threadseal

Zettex Threadsealer is designed for the locking and sealing of metal pipes and fittings. The product cures when confined in the absence of air between close fitting metal surfaces and prevents loosening and leakage from shock and vibration. The thixotropic nature reduces the migration of liquid product after application to the surface. Good chemical/solvent resistance to Ethanol, Motor Oil, Unleaded Petrol and Brake Fluid.

50 ml, 65 ml, 250 ml

■ Duct Tape

Zettex Duct Tape is an extremely strong multifunctional tape.



Roll 50 mtr

■ Primer Z-05

Zettex Primer Z-05 is a primer based on polyurethane and solvents for the optimum adhesion of Zettex MS polymers on porous surfaces. Improves the adhesion of Zettex MS polymers and provides protecting for example on wooden structures behind façade panels. Gives an attractive black finish. Improves the adhesion of Zettex MS 65 to cement-bonded façade cladding.

1 L Tin



■ J Roller

Pressure roller for pressing HPL or veneer onto bonded surfaces.



1 Piece

■ ZX 100 Cleaning Set

The ZX-100 Cleaning Set can be used to clean all spraying accessories with use of the Foam Cleaner.



Foil 1 piece

■ Handgun Eco (with extension)

A multifunctional gun for the application of all of our Spraybonds (X10 - X90). Due to a special nozzle it is possible to adjust the spraying pattern as well. The extension makes the work physically easier.

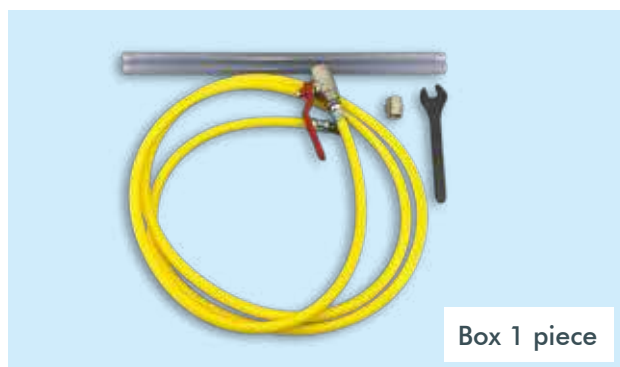
Handgun Eco (+ Extension 61 / 81 / 100 cm)



Repair set

■ ZX 200 Handy Set

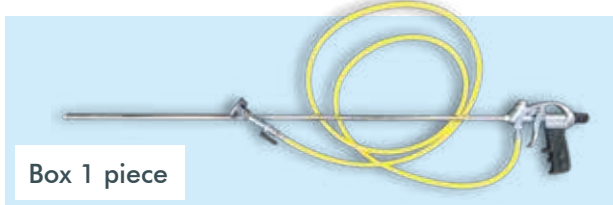
The ZX-200 Handy Set can be used on uneven roof floors where more adhesive is required. ZX-200 is specially designed for the X100.



Box 1 piece

■ ZX 300 Cleaning Set

The ZX-300 Cleaning Set consists of the complete range for the application of Zettex Spraybond X100 Foambond. After use: The gun has to be locked with the screw. Do not disconnect the gun and the hose from the canister, but maintain pressure. So you keep the system air-tight. Due to this you can use still use the product after two weeks, without curing of the adhesive in the hose or gun.



Box 1 piece

■ Hose

A universal hose for connecting to our Spraybond Canisters. You have to connect the hose to both Canister and Gun.



3,5 M & 5,5 M

■ PTFE Hose

The PTFE Hose can be used for the application of the Zettex Spraybonds. In especially for the Zettex Spraybond X80 and X90, which are based on PU and hybrid.



3,5 M

■ Caulkgun

Zettex Caulkgun is a high quality solid caulking gun. And an easy to apply gun for the application of all of our sealants and adhesives in cartridge packaging.



Foil 1 piece

■ Caulkgun 600ml Foil

This hand gun is a closed, manual gun for foil packs up to 600 ml. Pressure provided by not releasing the bar at the back of the gun.



Foil 1 piece



■ F1 Sam Pistol

Zettex / F1 SAM pistol is a professional pneumatic pistol for all types of sprayable 1K sealing systems. For dispensing Zettex 1K sealing system and for air-tight construction and bodywork

Box 1 piece

■ 2C Caulkgun

The Zettex 2C Caulkgun is a 2 component gun for the application of Zettex 2C products. This handy gun is very comfortable and leads to a perfect dosing.



Box 1 piece

■ Foamgun

An easy to use gun for the application of all our PU Foams with NBS Connection.



Floor displays

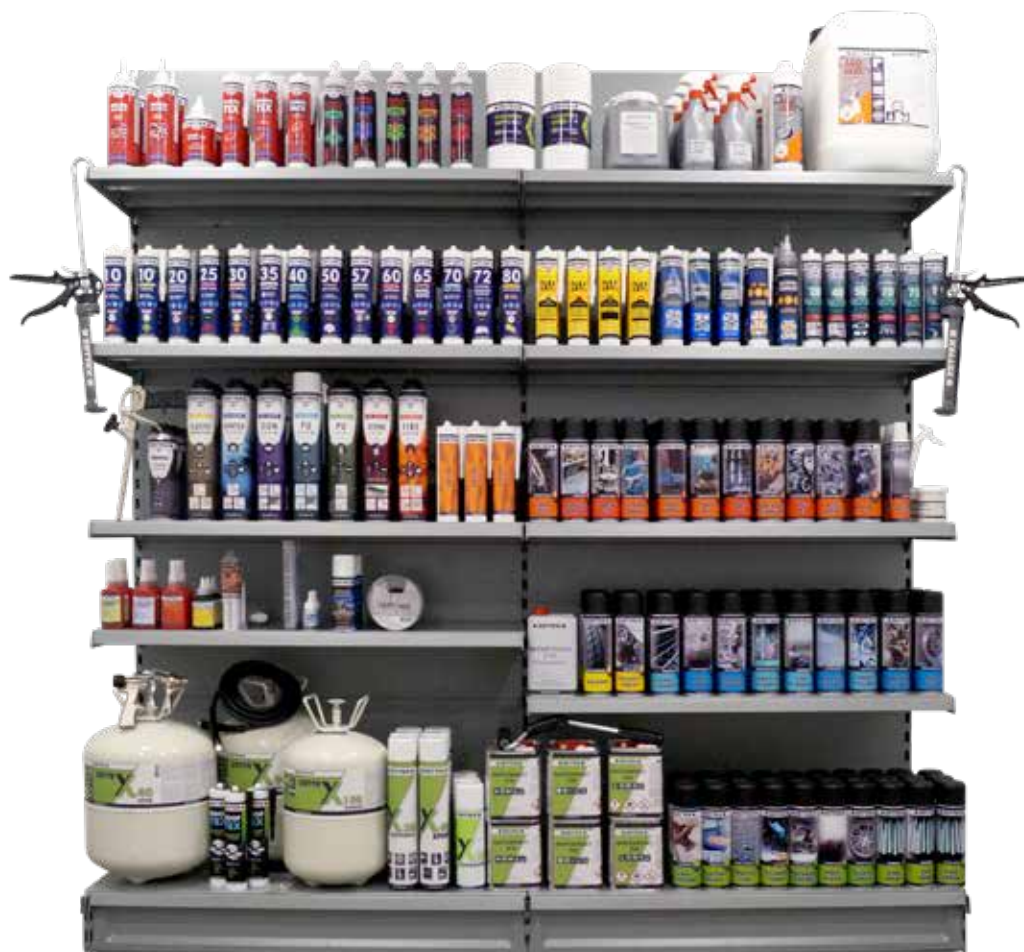
For more information about our shop concept contact our sales department at sales@zettex.com



■ Counter displays



■ Store concept





STICK WITH US FOR A STRONGER WORLD

Zettex Europe B.V.

Plaza 20, 4782 SK Moerdijk, The Netherlands

T +31 (0)888-93 88 39 | E sales@zettex.com | www.zettex.com

